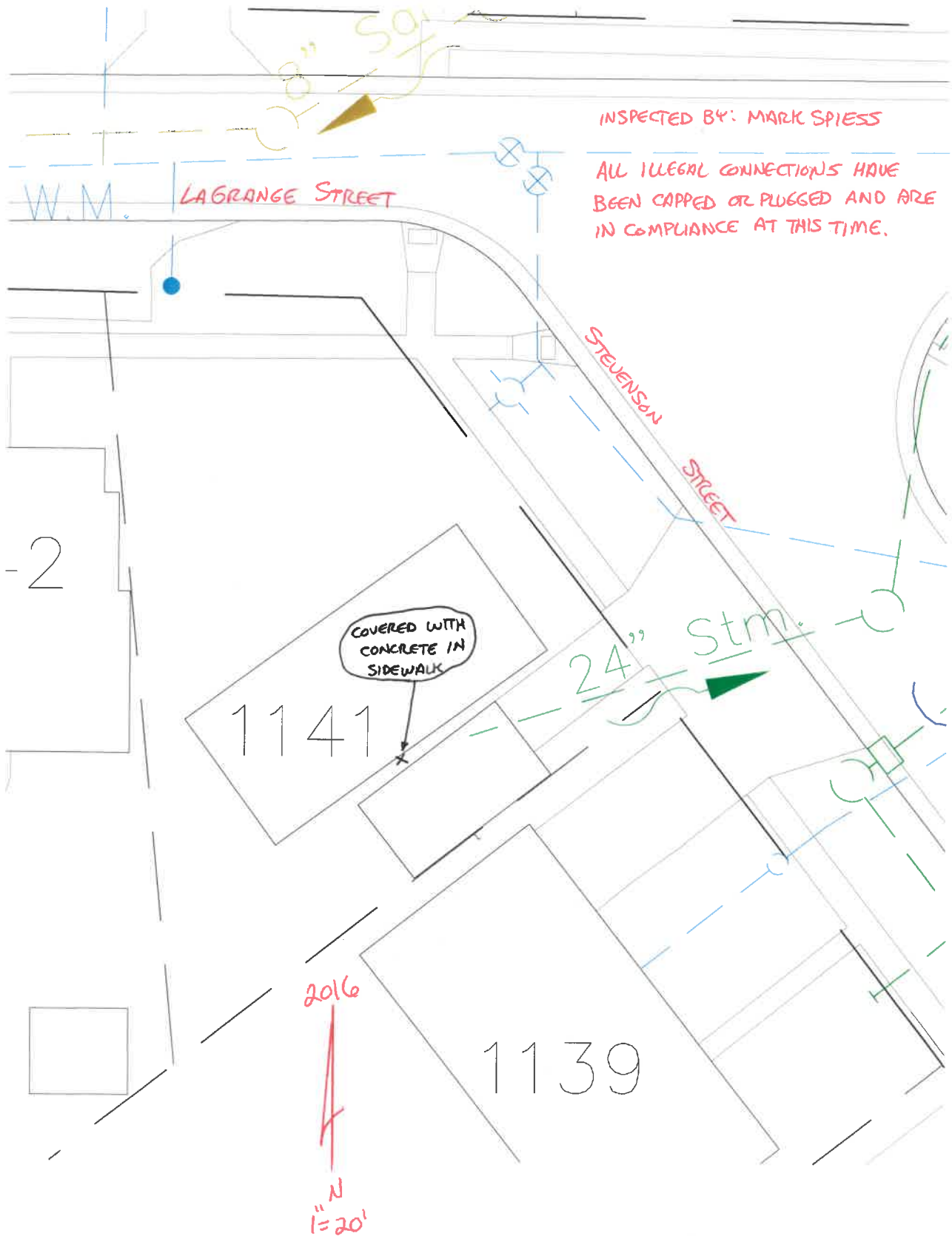


1141 STEVENSON STREET
ILLEGAL DOWNSPOUT INVESTIGATION



INSPECTED BY: MARK SPIESS

ALL ILLEGAL CONNECTIONS HAVE BEEN CAPPED OR PLUGGED AND ARE IN COMPLIANCE AT THIS TIME.

COVERED WITH CONCRETE IN SIDEWALK

1141

24" STM

1139

2016

1" = 20'

-2